

VisualGIS Server

Web access to VisualWorks Digital Video System Data

Overview

VisualGIS Server is software that makes digital video and accompanying survey data available across an enterprise and the web.

Users can access their data on zero-client (no install) HTML5 compatible browser based viewers on devices such as Desktops, tablets or iPads.

Share data by simply sending a web link and login details.

Video data is synchronised geographically with web maps provided by either ArcGIS Server or ArcGIS Online.

VisualGIS Server can be installed On-Premise or to the Cloud.

Principal Benefits

- ◆ Easy access to video worldwide
- ◆ No install
- ◆ Get data to Clients quicker
- ◆ Synchronises Digital Video and GIS Data
- ◆ Removes need to ship Hard-Drives
- ◆ Esri ArcGIS™ compatible
- ◆ Federated ArcGIS Security

Compatible Browsers

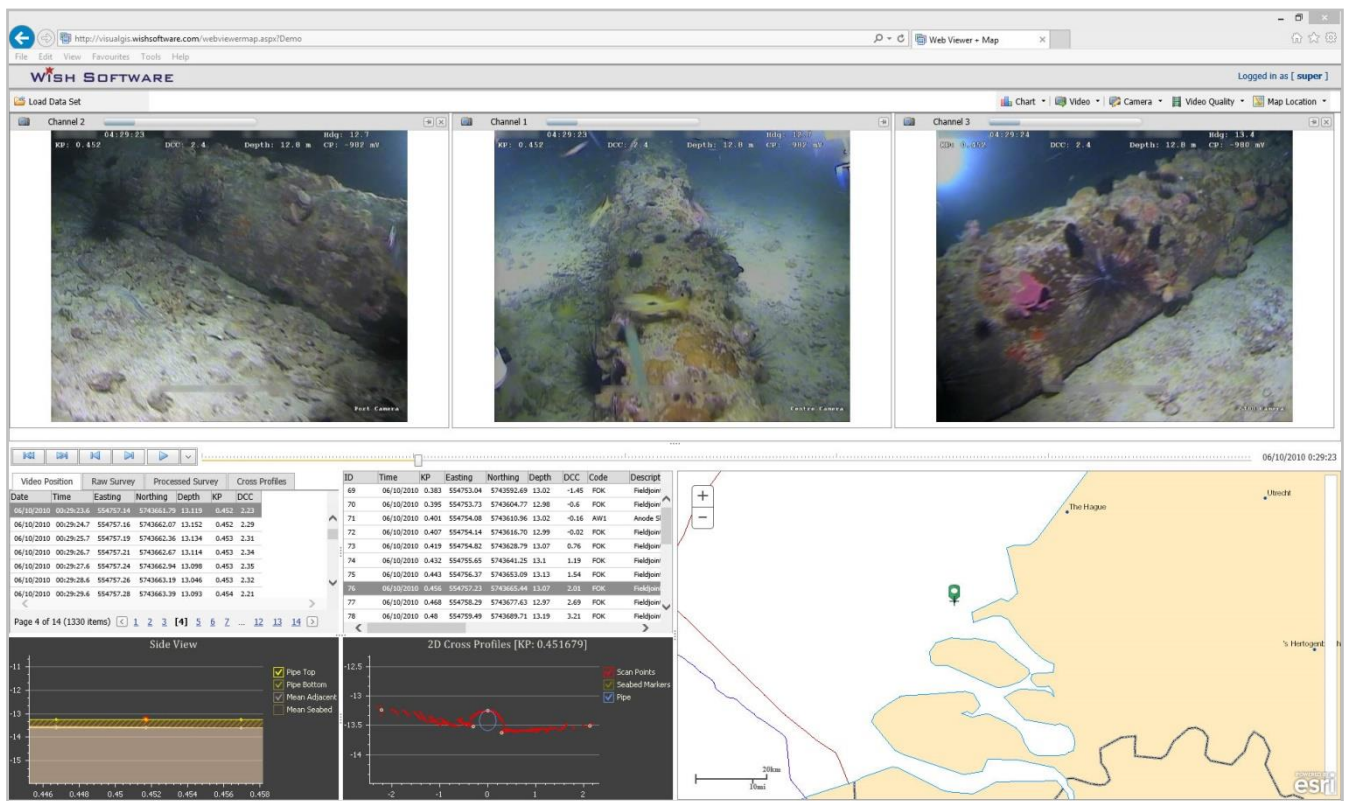
Internet Explorer 10/11



Google Chrome



Apple iOS 8

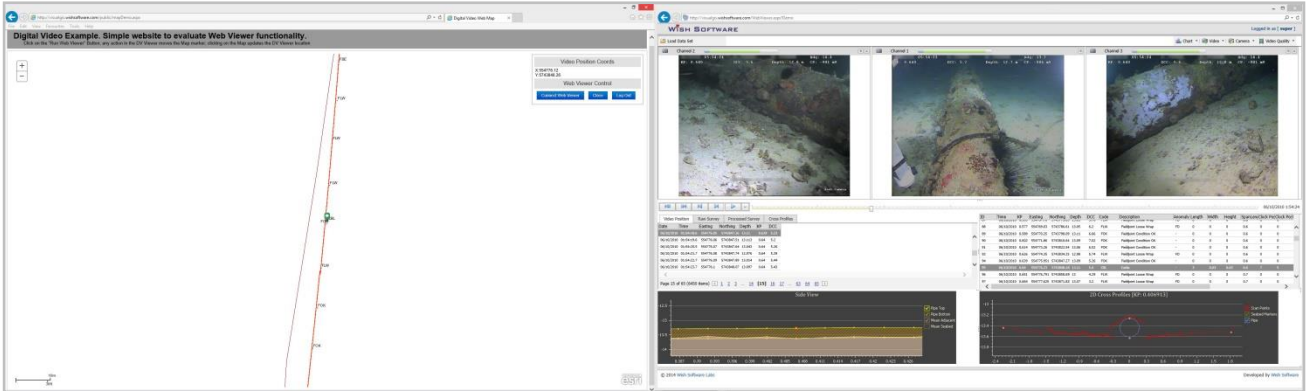
The screenshot displays the VisualGIS Server web interface in a browser. At the top, there are navigation tabs for 'Channel 2', 'Channel 1', and 'Channel 3', each showing a live video feed of an underwater scene. Below the video feeds is a data table with columns for Date, Time, KP, Easting, Northing, Depth, DCC, Code, and Descript. The table contains 14 rows of data. To the right of the table is a map showing the location of the survey points. Below the table and map are two graphs: 'Side View' and '2D Cross Profiles (KP: 0.451679)'. The 'Side View' graph shows a cross-section of the seabed with a yellow line for the pipe top and a red line for the pipe bottom. The '2D Cross Profiles' graph shows a cross-section of the seabed with a red line for the pipe top and a blue line for the pipe bottom. The interface also includes a search bar, a login field, and a 'Load Data Set' button.

Date	Time	KP	Easting	Northing	Depth	DCC	Code	Descript
06/10/2010	00:29:23.6	554757.14	5743661.79	13.119	0.402	2.33		
06/10/2010	00:29:24.7	554757.16	5743662.07	13.152	0.482	2.29		
06/10/2010	00:29:25.7	554757.19	5743662.36	13.134	0.402	2.21		
06/10/2010	00:29:26.7	554757.21	5743662.67	13.114	0.453	2.34		
06/10/2010	00:29:27.6	554757.24	5743662.94	13.098	0.453	2.35		
06/10/2010	00:29:28.6	554757.26	5743663.19	13.046	0.453	2.32		
06/10/2010	00:29:28.6	554757.28	5743663.39	13.093	0.454	2.21		

Single Page Web Browser

Viewer Options

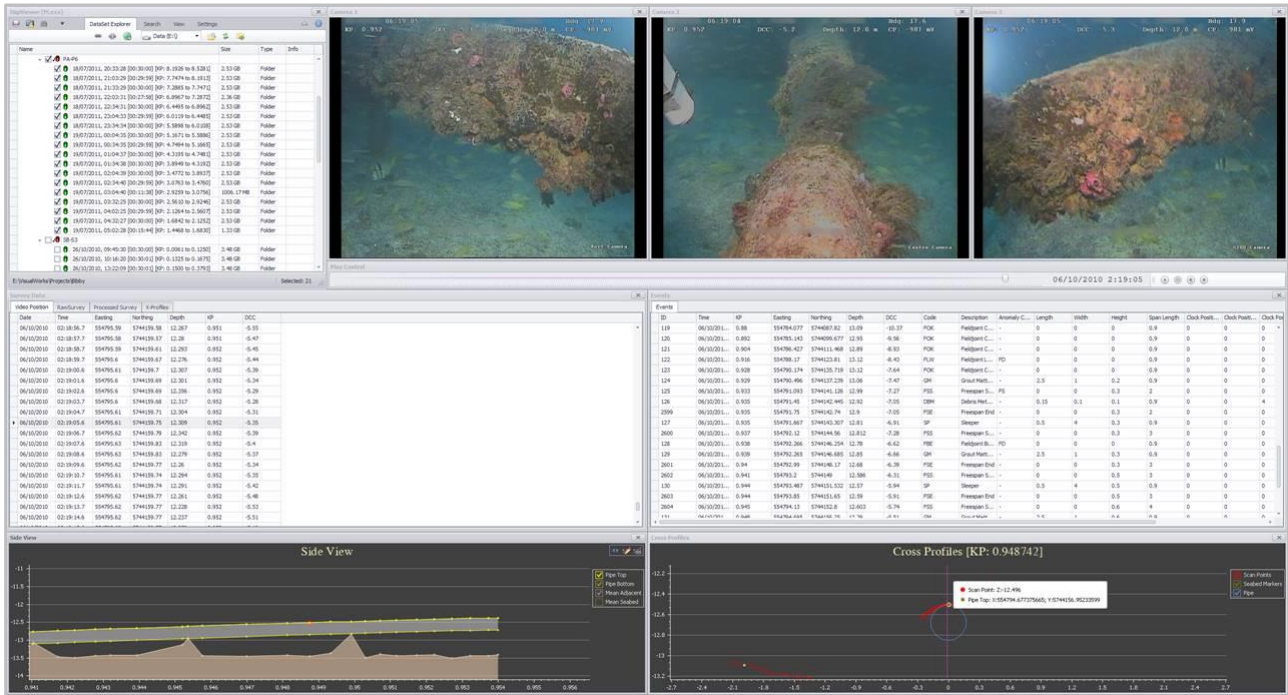
- ◆ Single Page Web Browser
Simply link the ArcGIS Server service to the Video Dataset - VisualGIS Server does the rest.
- ◆ Dual Page Web Browser
Add VisualGIS Server API calls to any Esri Web Map to link your own maps with the Digital Video data.
- ◆ Desktop Hybrid.
Windows Application that can access and compare VisualGIS Server data with local data (USB/NAS Drives).



Dual Web Page Browser

System Requirements

- ◆ Windows Server 2008/2012
- ◆ ArcGIS Server 10.2 or ArcGIS Online



Desktop Hybrid Application

Contact Information

Wish Software Limited
 Hartham Park
 CORSHAM, Wiltshire
 England, UK
 SN13 0RP

Tel: +44 (0)1249 700714
 Fax: +44 (0)870 220 0875
 Email: info@wishsoftware.com
 Web: www.wishsoftware.com